



Andrew J. Shahan, P.E., P.S., PMP

**MONTGOMERY
COUNTY ENGINEER**

451 West Third St

P.O. Box 972

Dayton, OH 45422-1260

(937) 225-4904 phone

(937) 496-7441 fax

MOT-Dog Leg Meeker Intersection Improvement

Estimated Project Length:	500 feet
Right-of-Way width:	Varies 40' to 65'
Preliminary Construction Estimate (FY '29):	\$2,327,000 (100% HSIP)
Design Contract Funding:	100% Federal

Project Background: The Office of the Montgomery County Engineer performed a Safety Study in 2024. The result of the study showed that a single lane roundabout is warranted at the intersection of Dog Leg Road & Meeker Road. As a result, the County applied for and was successful in obtaining HSIP funds for the design and construction of the roundabout.

Anticipated Design Services (LPA Scope of Services will control in case of conflict below):

1. PDP Path 2
2. Alternative Engineer's Report
3. Topographic and boundary survey
4. Maintenance of traffic design (full detour)
5. Right-of-way research and plan preparation
6. Utility coordination (meetings, obtaining relocation plans, and coordinating schedules)
7. SUL

Anticipated Utilities:

Electric	AES, Ohio Inc./Miami Valley Lighting
Gas	Centerpoint Energy
Water	Montgomery County Environmental Services
Communication	Charter/Spectrum, AT&T

Potential Stakeholders: Butler Township

Selection Subfactor: Key staff summaries and the project approach should clearly communicate staff experience in: roundabout design in close proximity to other intersections, roundabout design in geometrically constrained areas, and Rights-of-Way Access Guidelines.

Contract Type: Cost-plus net fee (11%)

ODOT Prequalifications:

DESIGN SERVICES:

Bicycle Facilities & Enhancement Design;
Complex Roadway Design;
Complex Right of Way Plan Development;
Subsurface Utility Location Services;
Geotechnical Engineering Services;
Geotechnical Testing Laboratory;
Geotechnical Field Exploration Services;
Geotechnical Drilling Inspection Services
Limited Lighting Design;

ENVIRONMENTAL SERVICES:

Ecological Surveys;
Archaeological Investigations;
History/Architectural Investigations;
Regulated Materials Review;
Public Involvement C1 and C2 Level CE;
Public Involvement D1 and Higher-Level CE;

FINANCIAL MANAGEMENT SYSTEM EVALUATION

Compliant with Federal Requirements (Prime consultant and subconsultants that provide engineering and design related services must meet this prequalification requirement)

Anticipated Consultant Selection Schedule:

Solicitation for Consultant Services	January 27, 2025
Letters of Interest Due to Montgomery County	February 17, 2025
Notification of Selected Consultant	March 5, 2025
Scope meeting with Selected Consultant	March 12, 2025
Price Proposal submitted	March 28, 2025
Commencement of Contract	April 22, 2025

Safety Application Summary

Dog Leg Rd and Meeker Rd Intersection
 Montgomery County, OH
 ODOT District 7

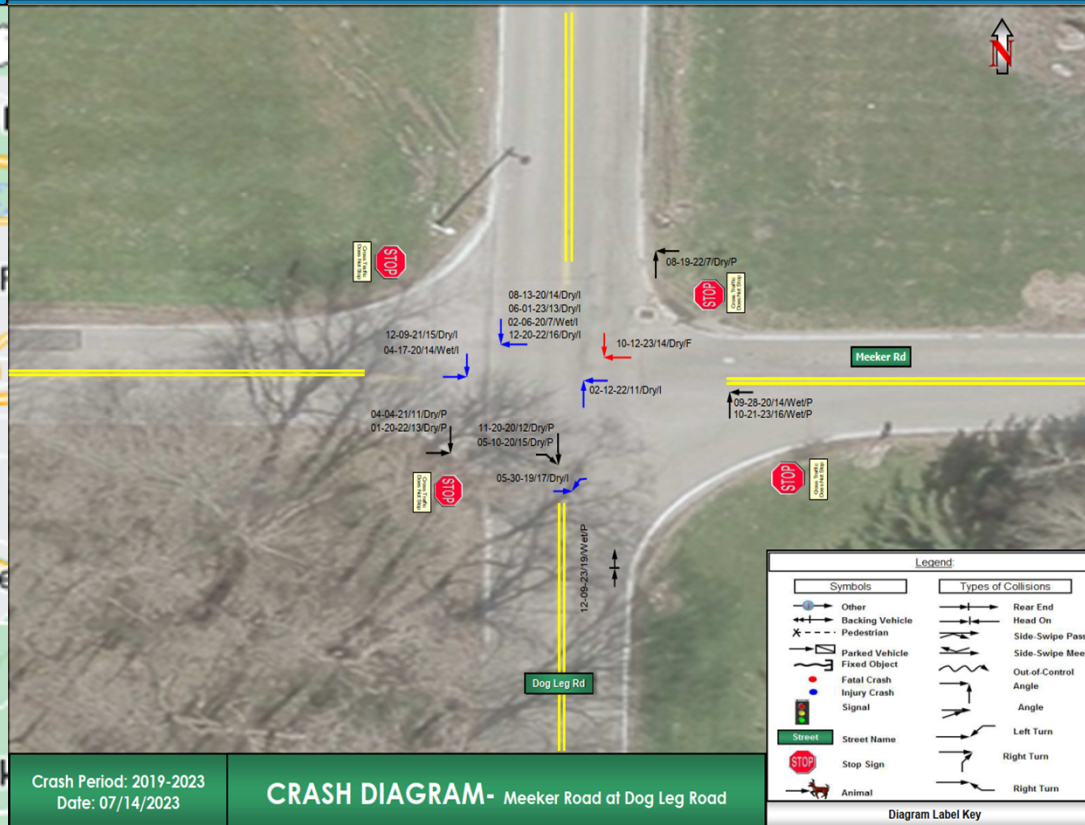
Project Priority and Background

This intersection was identified as a high crash location by ODOT and a safety study was completed in January 2024 revealing high severity crash issues. This safety funding application is an effort to implement the major findings of this study. Per the recommendations of this study, Montgomery County is interested in pursuing a roundabout at this location. Total estimated FY 2029 cost of countermeasures, including design, row, and construction is \$2,916,000

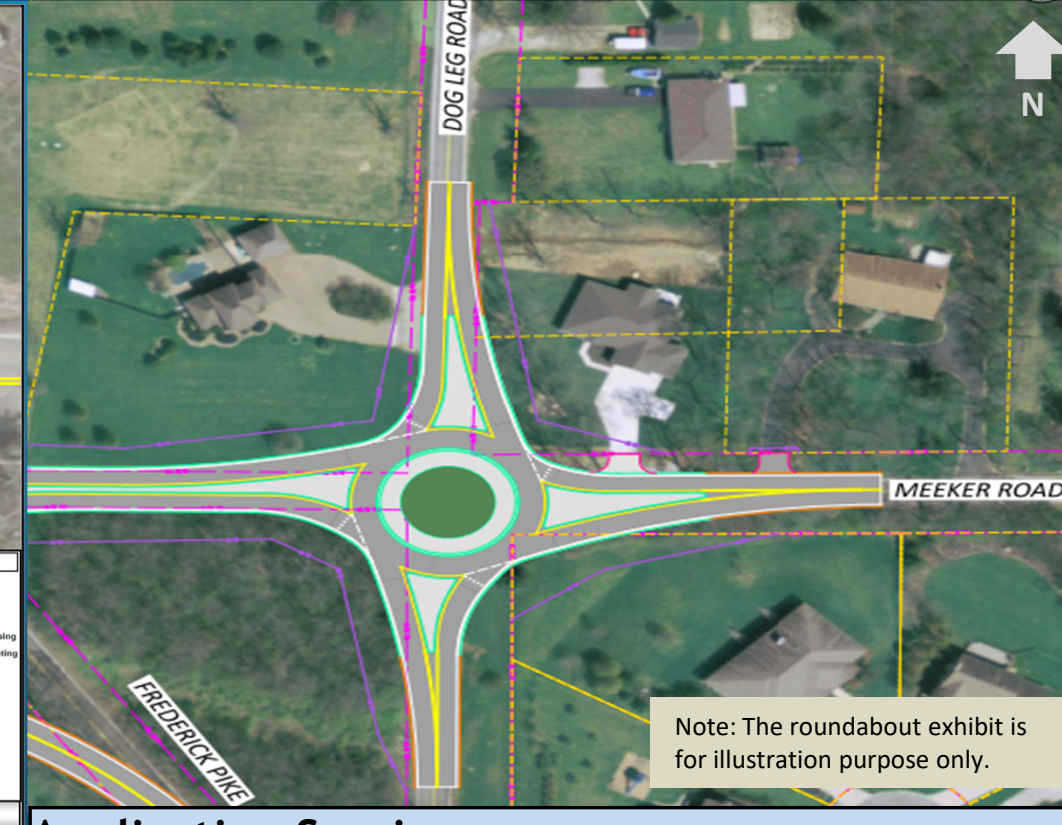
Montgomery County Map



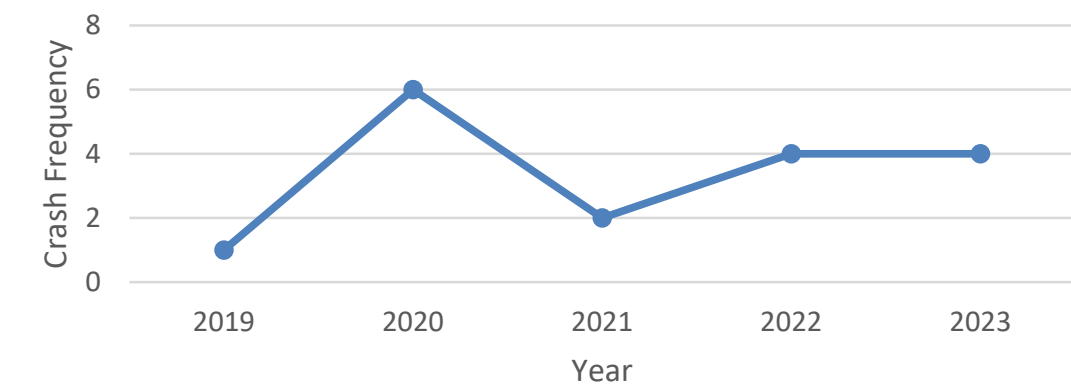
Crash Diagram



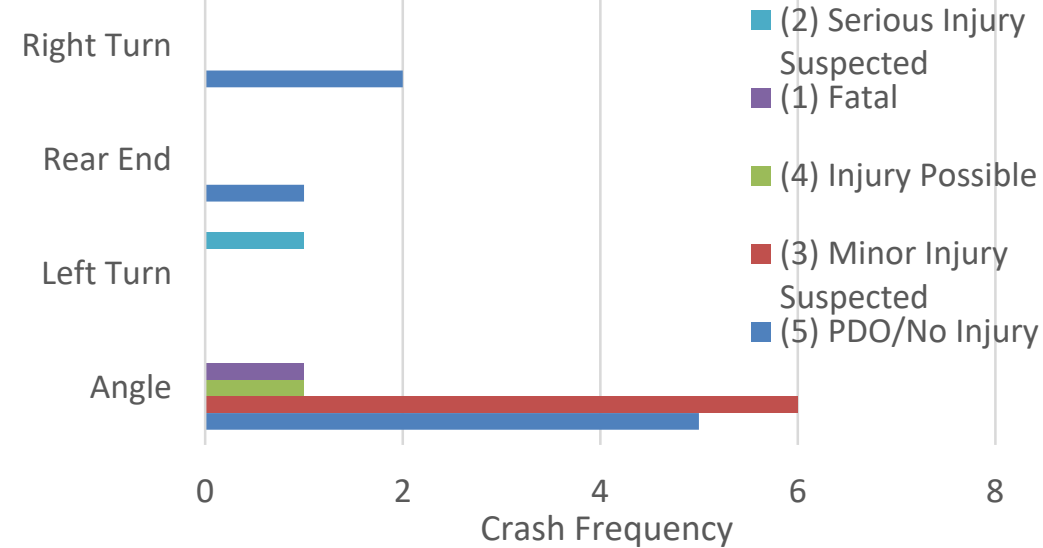
Proposed Roundabout Improvement



Total Crashes



Crash Type by Severity



Application Scoring

Category	Scoring Value	Points Awarded	Points Possible
Ratio of Observed Fatal and Serious Injuries to Observed Total Crashes	0.12	24	30
Percentage of the Potential for Safety Improvement to Total Expected Crashes	3.85%	2	20
Relative Severity Index	59,479.98	20	20
Equivalent Property Damage Only Index	6.16	20	20
Location Equity Measure	0.02%	0	10
Total		66	100